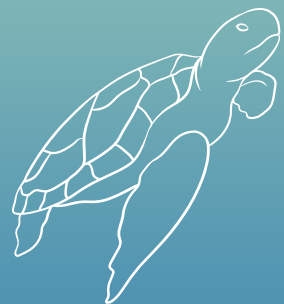
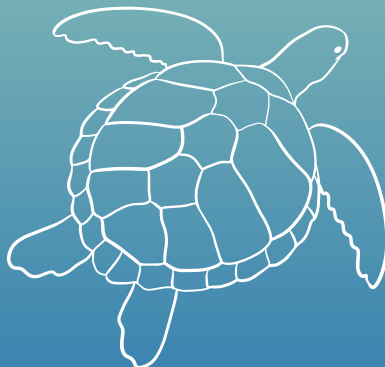
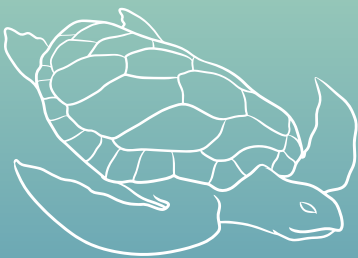




SEA TURTLE PATHWAY GAME

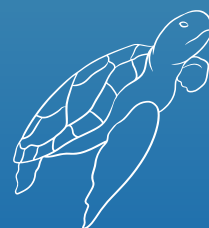
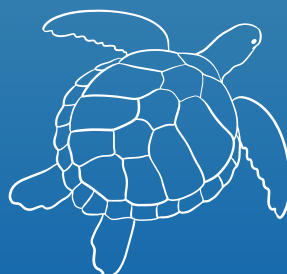
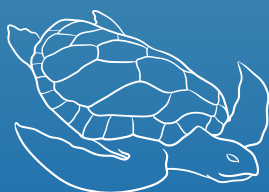


SEA TURTLE PATHWAY GAME

Let's play with the Sea turtles!

Target age: 4-8 years

1. Separate all cards and mix them
2. **Let's play in two:** each player has the same number of cards
3. The card with **two Sea turtles** is the *first card* and must be placed on the table before starting playing
4. Each player plays a card according to the image contained in the last card placed on the table, bearing in mind that the pictures must be domino-like paired
5. The one who remains without cards is **the winner**



CUT OUT

